

# Applied Research & Innovation in VET

John Edwards  
EURASHE Secretary General

First Forum on Vocational Excellence  
San Sebastian  
15 November 2022

[www.eurashe.eu](http://www.eurashe.eu)

# PROFESSIONAL HIGHER EDUCATION

Professional higher education is a form of higher education that offers a particularly intense integration with the world of work in all its aspects, including teaching, learning, research and governance, and at all levels of the overarching qualifications framework of the EHEA.

Its function is to diversify learning opportunities, enhance the employability of graduates, offer qualifications and stimulate innovation for the benefit of learners and society. The world of work includes all enterprises, civil society organisations and the public sector.

The intensity of integration with the world of work is manifested by a strong focus on the application of learning achievements. This approach involves combining phases of work and study, a concern for employability, cooperation with employers, the use of practice-relevant knowledge and use-inspired research.



All forms and levels of the education process involving, in addition to general knowledge, the study of technologies and related sciences, the acquisition of practical skills, know-how, attitudes and understanding relating to occupations in the various sectors of economic and social life.

(UNESCO Convention)

Education and training which aims to equip people with knowledge, know-how, skills and/or competences required in particular occupations or more broadly in the labour market.

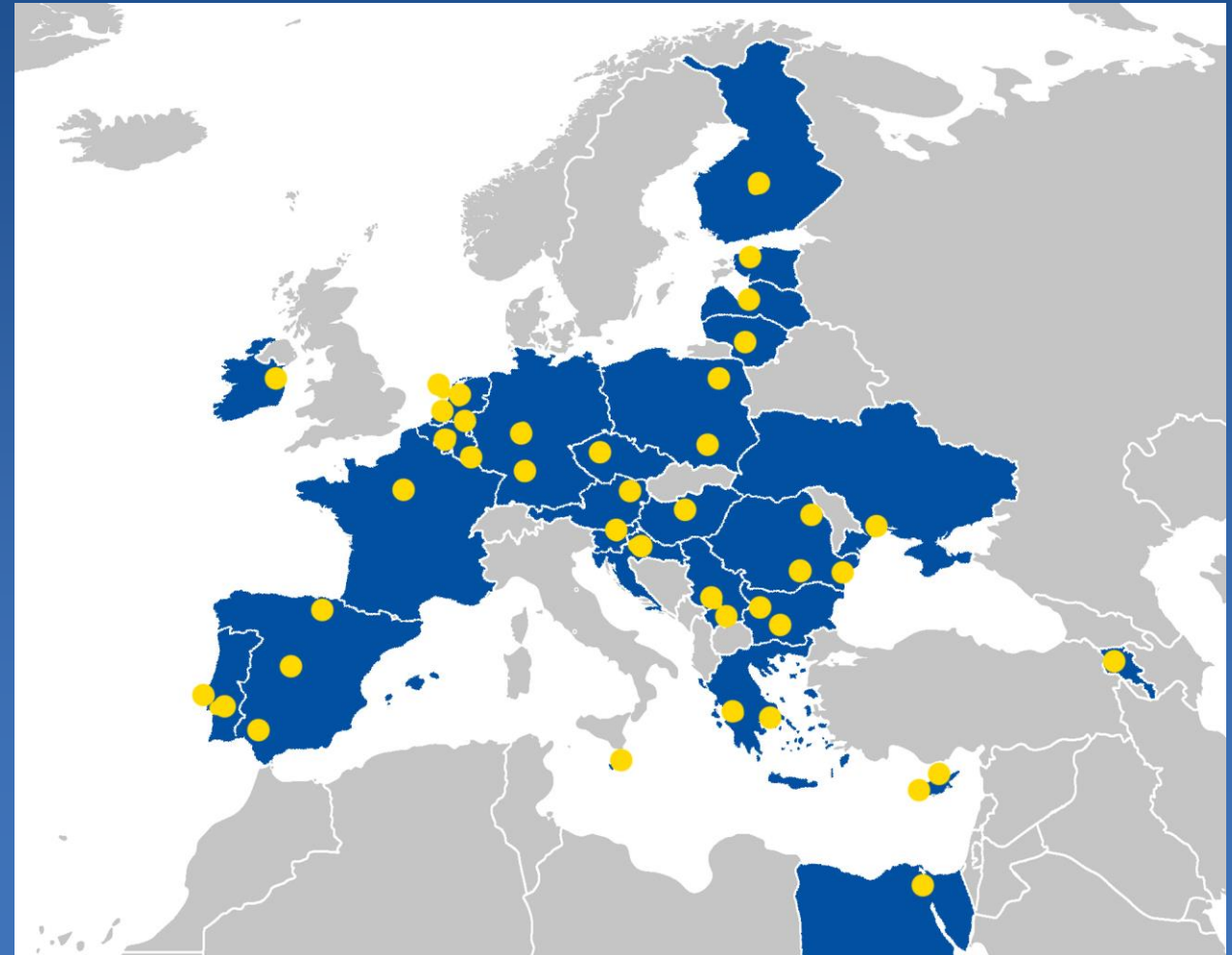
(CEDEFOP)



# MEMBERSHIP

EURASHE represents HEIs which run professionally orientated teaching programmes and undertake applied research.

- 53 Full members: 13 national associations, 40 individual institutions
- 13 Affiliate members outside the European Higher Education Area
- About 640 HEIs
- **NEW FOR 2023:** Non-HEIs can join EURASHE as Associate Members



# EURASHE Communities of Practice



## Research

Launched April 2022

Next Core Group Meeting: 11 November

Coleaders: Thomas Berger & Nijole Zinkevičienė

Secretariat: John Edwards



## Quality Assurance

Launch on 13 October in Namur (Belgium)

Coleaders: Eltjo Bazen & Ana Tecilazic

Secretariat: Jakub Grodecki



## Future Skills

Launching in 2022!

Coleaders: Jon Altuna and Ulf Elhers

Secretariat: Marta Rodrigues



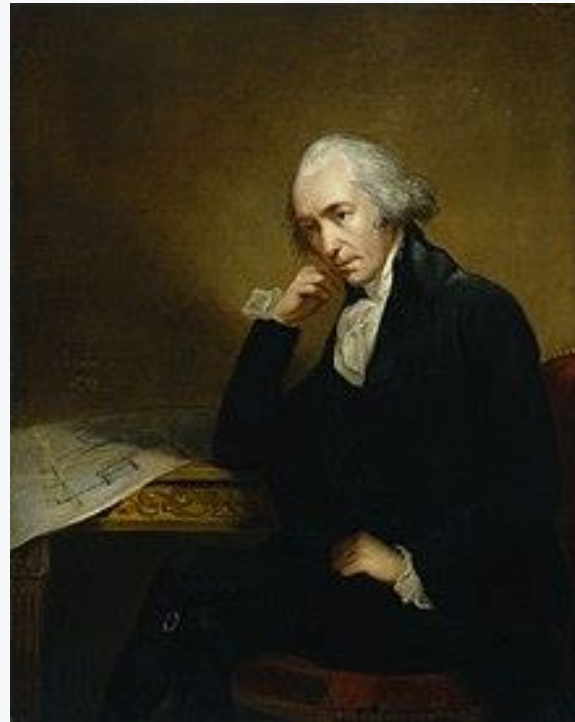
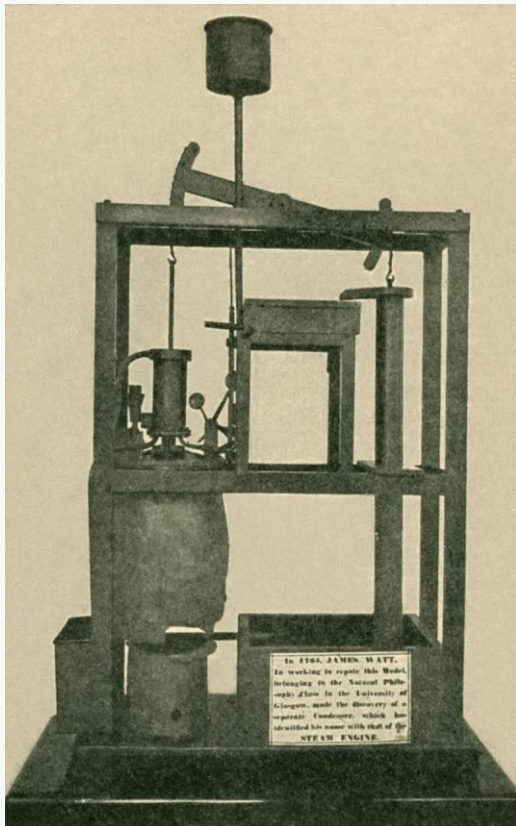
# Isolation of Graphene



Andre Geim and Konstantin Novoselov from the University of Manchester received the nobel prize for physics in 2004 for isolating and characterising Graphene

Despite the founding of the Graphene institute in Manchester, the main commercial applications have been developed elsewhere in the UK and in other countries.

# James Watt the repair man



In the 1760s an instrument maker and repairman at the University of Glasgow was asked to repair a model of the Newcomen Pump, used in the steam engine.

**James Watt *the repairman*** - not the university professor or professional researcher – identified the problem, solved it, and set in motion the Industrial Revolution that followed.

# Smart Specialisation

Emphasis	Omissions
Knowledge creation	Knowledge diffusion & exploitation
Supply-side	Demand-side
STI model	DUI model (Doing, Using, Interacting)
Universities & RTOs	KIBS and VET centres
High-tech industries and large companies	Traditional industries and SMEs
Investment and financial markets	Labour force and labour market
Researchers, PhDs, managers, engineers	Intermediate and technical qualifications
The region	Multi-level & local systems

*Adapted from: Navarro, M. (2014). El papel de los centros de formación profesional en los sistemas de innovación regionales y locales. La experiencia del País Vasco. Cuadernos de Orkestra, 7.*

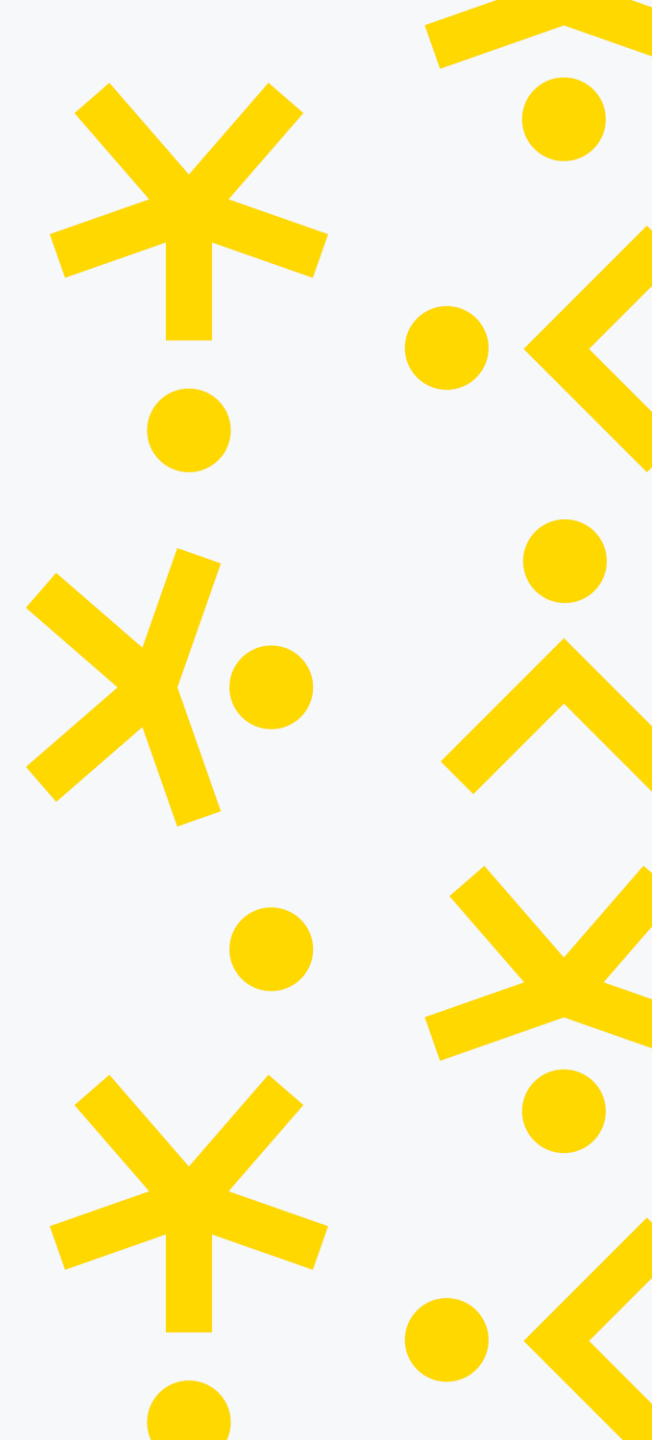


## The way forward...

**Mapping:** Across Europe and globally – Broad definition of VET

**Guidelines:** Capacity building and collaboration

**Assessment:** Appropriate frameworks





# EURASHE

European Association of Institutions  
in Higher Education

John.edwards@eurashe.eu



@eurashe



@eurashe



@eurashe



@eurashe